

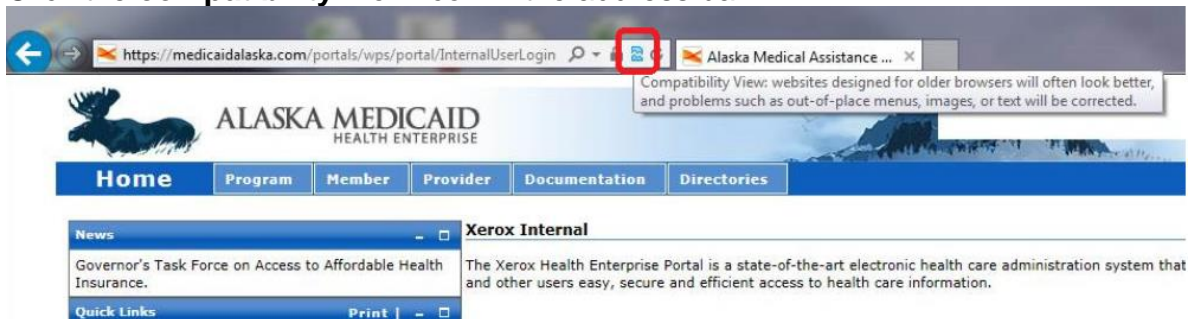
Health Enterprise/Internet Explorer Compatibility

Alaska Medicaid Health Enterprise (Health Enterprise) is designed to work in Internet Explorer. Providers using Internet Explorer versions 10 or 11 may put their browsers in compatibility view to ensure Health Enterprise opens properly. All other Internet Explorer versions are unaffected.

Internet Explorer 10

To open Compatibility View for Health Enterprise in Internet Explorer version 10:

1. Open Internet Explorer 10.
2. Go to <http://medicaidalaska.com>.
3. Click the **compatibility view** icon in the address bar.




4. Hit F4 to refresh the page.

Health Enterprise will now always open in compatibility view.

Internet Explorer 11

To open Compatibility View for Health Enterprise in Internet Explorer version 11:

5. Open Internet Explorer 11.
6. Go to <http://medicaidalaska.com>.
7. Click the **tools** icon in the upper right. 
8. Click **Compatibility View Settings**.
9. Click **Add** to add <http://medicaidalaska.com> to the list of sites that open in compatibility view.
10. Hit F5 to refresh the page.

Health Enterprise will now always open in compatibility view.